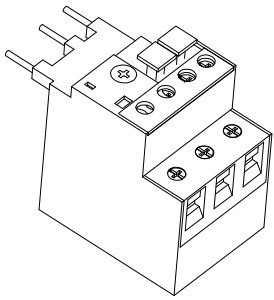


Relè termico TOR-C

Thermal Overload Relay TOR-C



Disalimentare il dispositivo prima di ogni operazione
Turn off the power before carrying out any repair or maintenance.

Assicurarsi di aver scelto il giusto relè termico in funzione della corrente di motore
Ensure that right thermal overload relay is selected due to the motor current

Tarare il relè termico alla corrente nominale del motore
Adjust the current setting selector of thermal overload relay according to full load current specified on the motor.

I relè termici usati con avviatori Y/D devono essere tarati alla $I_n \times 0,58$
Thermal overload relays used with Y/D starters are to be adjusted at $0,58 \times FLA$

Quando il relè scatta, il contatto (NO) 95-96 si apre, il contatto (NC) 97-98 si chiude
When relay trips, contact (NO) 95-96 opens and contact 97-98 closes

Temperatura di funzionamento: Operational temperature:	-5° - 55° C
Temperatura di stoccaggio Storage temperature:	-40° - 70°C

Montaggio Mounting

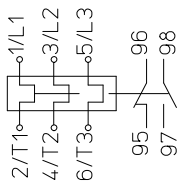
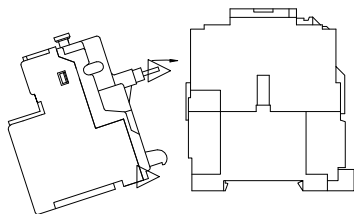
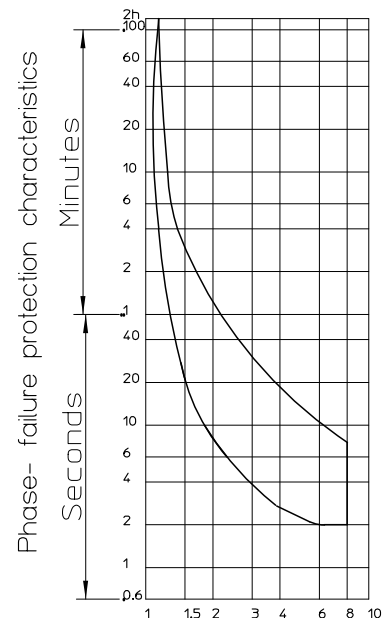
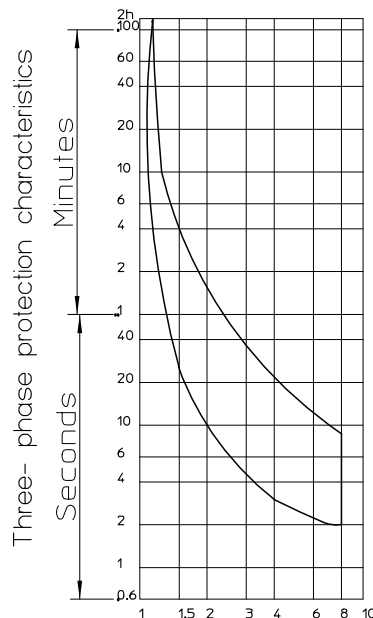


fig.1

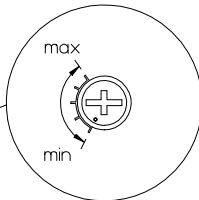
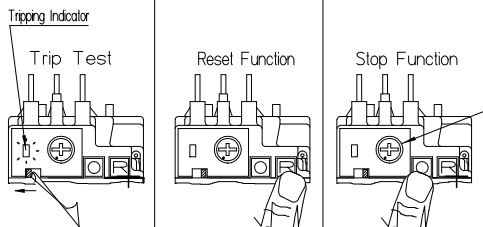


Inserire i terminali di connessione come illustrato in fig.1
Insert connection pins as shown in fig.1

- GH15BN**
- GH15CN**
- GH15DN**
- GH15ET**
- GH15FT**
- GH15GS**



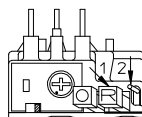
9306966 Oc107



Contact state

NC 95-96	Aperto/Open	Chiuso/Closed	Aperto/Open
NO 97-98	Chiuso/Closed	Aperto/Open	Aperto/Open

Selezione del reset automatico
Setup of Auto-reset

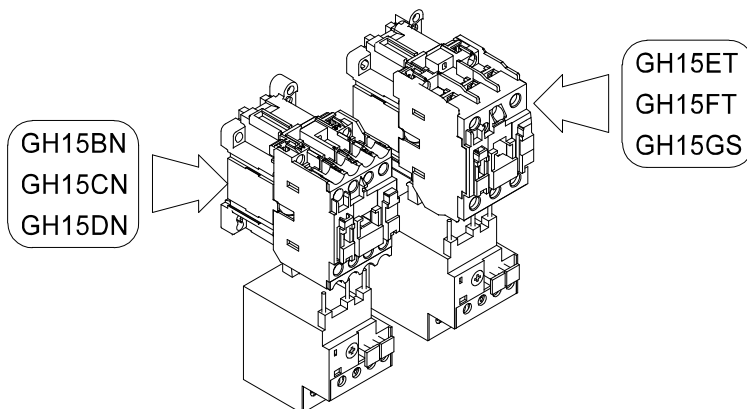
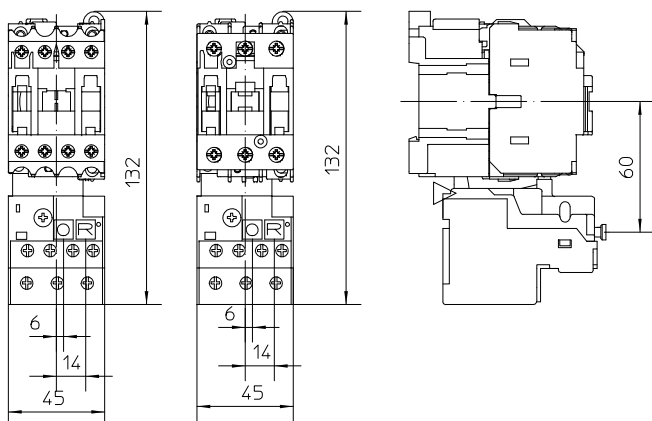


- 1) Premere il pulsante di reset (R)
1) Push the reset button (R)
- 2) Spingere verso il basso la levetta
2) Pull-down the toggle

Dati tecnici Technical data

Circuito principale / Main circuit		
Tensione nominale di isolamento U_i Rated insulation voltage U_i	690 Vac	
Circuito di controllo / Control circuit		
Fusibile di protezione gG Short circuit protection fuse gG	6 A	
Tensione nominale di isolamento U_i Rated insulation voltage U_i	690 Vac	
	24V 230V 400V 24V 125V	
AC15 4A 2A 1,5A	DC-13 2A 0,55A	
	Circuito principale / Main circuit	Contatti ausiliari / Auxiliary contacts
Sezione di collegamento Cable cross-section	2 x 1...4mm ² AWG 18...12	2 x 1...4mm ² AWG 18...12

Overall Dimensions :



La presente documentazione potrà essere soggetta a modifiche senza preavviso
Specifications are subject to change without notice

9306966 Oc107