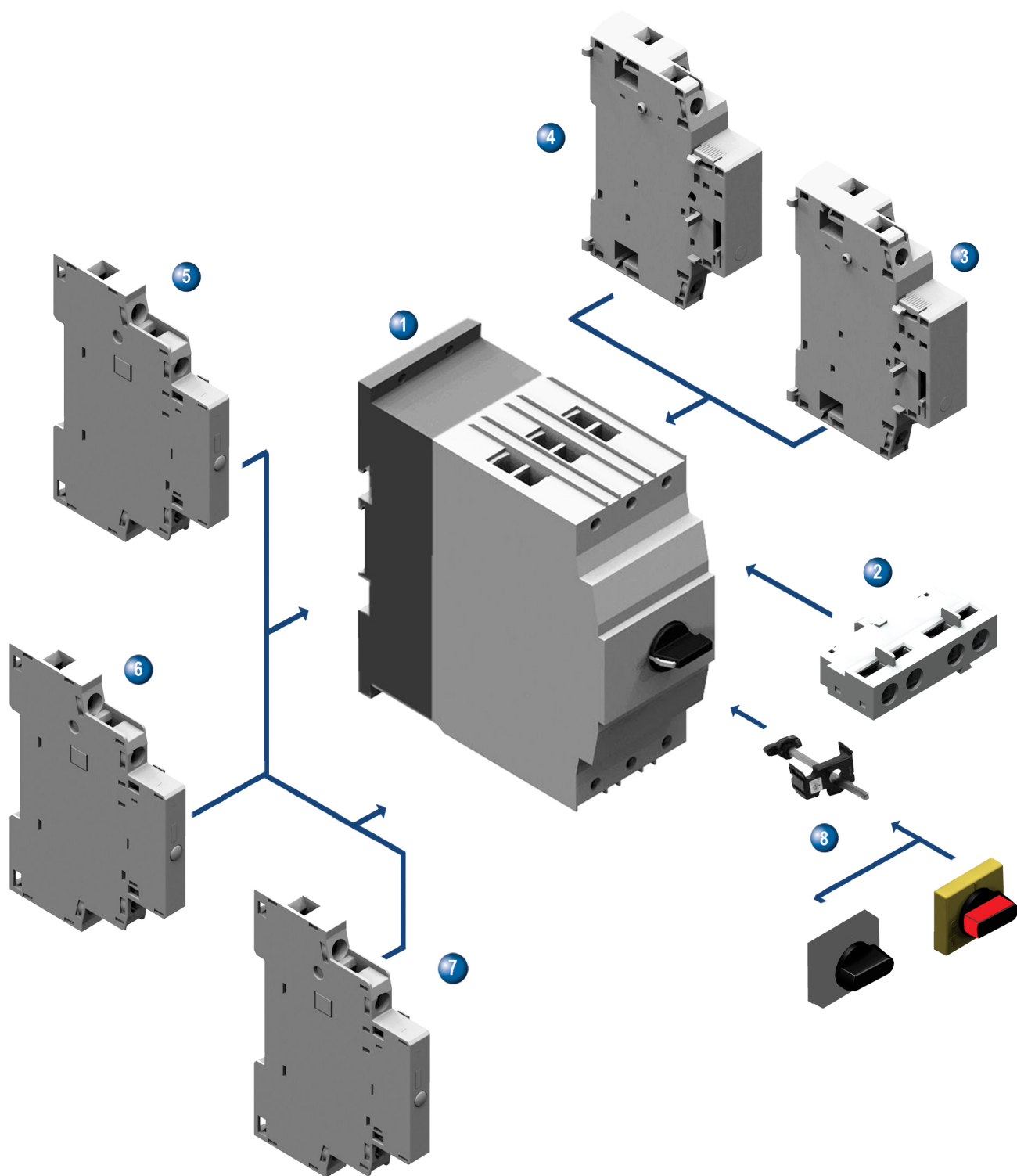


B



1 Interruttore automatico salvamotore (M4-100R)
Manual motor starter (M4-100R)

2 Contatto ausiliario frontale (M4-HQ)
Auxiliary contact block for top mounting (M4-HQ)

3 Dispositivo di sgancio a distanza (M4-A)
Shunt release (M4-A)

4 Dispositivo di sgancio di minima tensione (M4-U)
Undervoltage release (M4-U)

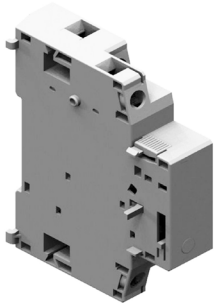
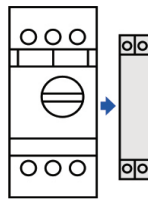
5 Contatto ausiliario laterale (M4-HS)
Auxiliary switch for side mounting (M4-HS)

6 Contatto ausiliario di allarme (M4-MA)
Auxiliary alarm switch (M4-MA)

7 Contatto ausiliario di allarme (corto circuito) (M4-M)
Auxiliary alarm switch (short circuit) (M4-M)

8 Manovra blocco porta IP65 (M4-100R-EH1/EHN1)
Door interlock handle IP65 (M4-100R-EH1/EHN1)

BOBINA DI SGANCIO / SHUNT TRIP DEVICES (M4-A)

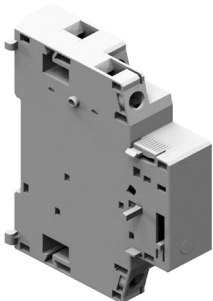
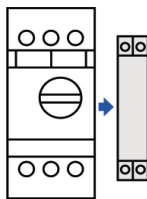


Modello Type	Codice ord. Part number	Tensione bobina Coil voltage		Montaggio Mounting	Peso [g] Weight [g]
		100% ON	max. 5 sec. ON		
M4-A24	8401066	20-24V 50Hz / 28V 60Hz	20-70V 50-60Hz DC	laterale side	112
M4-A110	8401067	75-127V 50Hz / 120V 60Hz	75-190V 50-60Hz DC	laterale side	112
M4-A230	8401068	190-230V 50Hz / 240-260V 60Hz	190-330V 50-60Hz DC	laterale side	112
M4-A240	8401069	200-240V 50Hz / 277V 60Hz	200-300V 50-60Hz DC	laterale side	112
M4-A400	8401070	300-400V 50Hz / 440-460V 60Hz	300-500V 50-60Hz DC	laterale side	112
M4-A415	8401071	330-440V 50Hz / 460-480V 60Hz	330-500V 50-60Hz DC	laterale side	112

Questo dispositivo fa scattare automaticamente l'interruttore quando la bobina di sgancio è alimentata.

This device trips the circuit-breaker when the release coil energized.

BOBINA DI MINIMA TENSIONE / UNDERVOLTAGE TRIP DEVICES (M4-U)



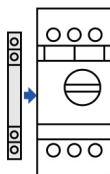
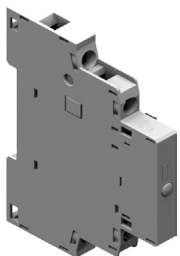
Modello Type	Codice ord. Part number	Tensione bobina Coil voltage	Montaggio Mounting	Peso [g] Weight [g]
M4-U24	8401060	24V 50Hz / 28V 60Hz	laterale / side	110
M4-U110	8401061	110-127V 50Hz / 120V 60Hz	laterale / side	110
M4-U230	8401062	220 - 230V 50Hz / 240 - 260V 60Hz	laterale / side	110
M4-U240	8401063	240V 50Hz / 277V 60Hz	laterale / side	110
M4-U400	8401064	380 - 400V 50Hz / 440 - 460V 60Hz	laterale / side	110
M4-U415	8401065	415 - 440V 50Hz / 460 - 480V 60Hz	laterale / side	110
M4-U415		415 - 440V 50Hz/460 - 480V 60Hz	laterale / side	115

Previene il riavvio accidentale del motore una volta fornita di nuovo tensione, utilizzabile per lo stop di emergenza in accordo con la IEC 60204.

Trips the circuit-breaker when the voltage is lower than voltage release value.

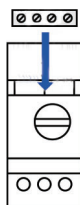
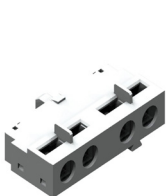
Prevents the motor from being restarted accidentally when the voltage is restored, suitable for EMERGENCY STOP acc.to IEC 60204.

CONTATTI AUSILIARI / CONTACT BLOCKS (M4-HS)

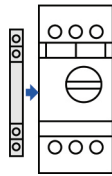
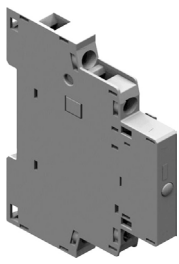


Modello Type	Codice ord. Part number	Contatti aux Aux. contact	Montaggio Mounting	Peso [g] Weight [g]
M4-HS11	8400955	1NO + 1NC	laterale / side	30
M4-HS20	8401072	2NO	laterale / side	30
M4-HS02	8401073	2NC	laterale / side	30

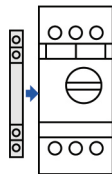
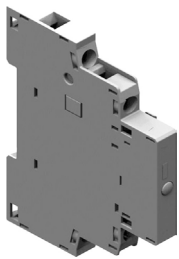
CONTATTI AUSILIARI / CONTACT BLOCKS (M4-HQ)



Modello Type	Codice ord. Part number	Contatti aux Aux. contact	Montaggio Mounting	Peso [g] Weight [g]
M4-HQ11	8401074	1NO + 1NC	frontale / front	20
M4-HQ20	8401075	2NO	frontale / front	20
M4-HQ02	8401076	2NC	frontale / front	20

CONTATTI DI ALLARME / ALARM SWITCH (M4-MA)


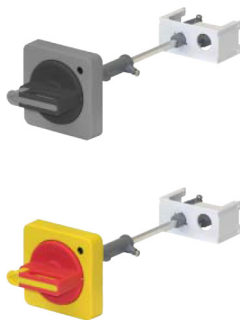
Modello Type	Codice ord. Part number	Contatti aux Aux. contact	Montaggio Mounting	Peso [g] Weight [g]
M4-MA11	8401077	1NO + 1NC	laterale / side	40

CONTATTI DI ALLARME / ALARM SWITCH (short circuit) (M4-M)


Modello Type	Codice ord. Part number	Contatti aux Aux. contact	Montaggio Mounting	Peso [g] Weight [g]
M4-M11	8401078	1NO + 1NC	laterale / side	40

Opera in caso di corto-circuito con corrente 20 volte superiore alla corrente nominale dell'interuttore.

Operates in case of short circuit accidents that is over 20 times of the rated current of the circuit breaker.

MANOVRA BLOCCO PORTA IP65 / DOOR INTERLOCK HANDLE IP65 (M4-100R-EH1/EHN1)


Modello Type	Codice ord. Part number	Descrizione Description	Peso [g] Weight [g]
M4-100R-EH1 115	8401079	manovra blocco porta nera + albero 115mm <i>black handle + shaft 115mm</i>	100
M4-100R-EH1 315	8401080	manovra blocco porta nera + albero 315mm <i>black handle + shaft 315mm</i>	200
M4-100R-EHN1 115	8401081	manovra blocco porta giallo-rossa + albero 115mm <i>yellow-red handle + shaft 115mm</i>	100
M4-100R-EHN1 315	8401082	manovra blocco porta giallo-rossa + albero 115mm <i>yellow-red handle + shaft 115mm</i>	200