

**1** Interruttore automatico salvamotore (M4-100R)  
Manual motor starter (M4-100R)

**2** Contatto ausiliario frontale (M4-HQ)  
Auxiliary contact block for top mounting (M4-HQ)

**3** Dispositivo di sgancio a distanza (M4-A)  
Shunt release (M4-A)

**4** Dispositivo di sgancio di minima tensione (M4-U)  
Undervoltage release (M4-U)

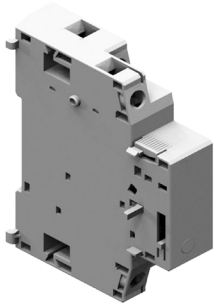
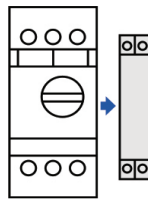
**5** Contatto ausiliario laterale (M4-HS)  
Auxiliary switch for side mounting (M4-HS)

**6** Contatto ausiliario di allarme (M4-MA)  
Auxiliary alarm switch (M4-MA)

**7** Contatto ausiliario di allarme (corto circuito) (M4-M)  
Auxiliary alarm switch (short circuit) (M4-M)

**8** Manovra blocco porta IP65 (M4-100R-EH1/EHN1)  
Door interlock handle IP65 (M4-100R-EH1/EHN1)

**BOBINA DI SGANCIO / SHUNT TRIP DEVICES ( M4-A )**

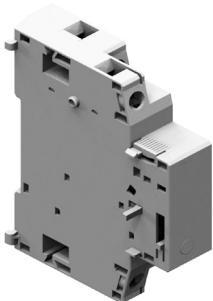
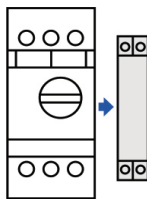


Modello Type	Codice ord. Part number	Tensione bobina Coil voltage		Montaggio Mounting	Peso [g] Weight [g]
		100% ON	max. 5 sec. ON		
M4-A24	8401066	20-24V 50Hz / 28V 60Hz	20-70V 50-60Hz DC	laterale side	112
M4-A110	8401067	75-127V 50Hz / 120V 60Hz	75-190V 50-60Hz DC	laterale side	112
M4-A230	8401068	190-230V 50Hz / 240-260V 60Hz	190-330V 50-60Hz DC	laterale side	112
M4-A240	8401069	200-240V 50Hz / 277V 60Hz	200-300V 50-60Hz DC	laterale side	112
M4-A400	8401070	300-400V 50Hz / 440-460V 60Hz	300-500V 50-60Hz DC	laterale side	112
M4-A415	8401071	330-440V 50Hz / 460-480V 60Hz	330-500V 50-60Hz DC	laterale side	112

Questo dispositivo fa scattare automaticamente l'interruttore quando la bobina di sgancio è alimentata.

*This device trips the circuit-breaker when the release coil energized.*

**BOBINA DI MINIMA TENSIONE / UNDERVOLTAGE TRIP DEVICES ( M4-U )**



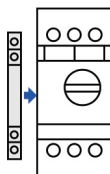
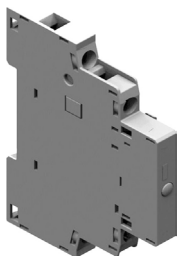
Modello Type	Codice ord. Part number	Tensione bobina Coil voltage	Montaggio Mounting	Peso [g] Weight [g]
M4-U24	8401060	24V 50Hz / 28V 60Hz	laterale / side	110
M4-U110	8401061	110-127V 50Hz / 120V 60Hz	laterale / side	110
M4-U230	8401062	220 - 230V 50Hz / 240 - 260V 60Hz	laterale / side	110
M4-U240	8401063	240V 50Hz / 277V 60Hz	laterale / side	110
M4-U400	8401064	380 - 400V 50Hz / 440 - 460V 60Hz	laterale / side	110
M4-U415	8401065	415 - 440V 50Hz / 460 - 480V 60Hz	laterale / side	110
M4-U415		415 - 440V 50Hz/460 - 480V 60Hz	laterale / side	115

Previene il riavvio accidentale del motore una volta fornita di nuovo tensione, utilizzabile per lo stop di emergenza in accordo con la IEC 60204.

*Trips the circuit-breaker when the voltage is lower than voltage release value.*

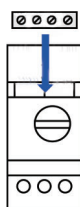
*Prevents the motor from being restarted accidentally when the voltage is restored, suitable for EMERGENCY STOP acc.to IEC 60204.*

**CONTATTI AUSILIARI / CONTACT BLOCKS (M4-HS)**

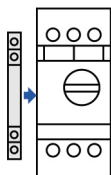
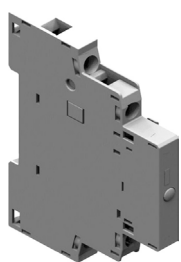


Modello Type	Codice ord. Part number	Contatti aux Aux. contact	Montaggio Mounting	Peso [g] Weight [g]
M4-HS11	8400955	1NO + 1NC	laterale / side	30
M4-HS20	8401072	2NO	laterale / side	30
M4-HS02	8401073	2NC	laterale / side	30

**CONTATTI AUSILIARI / CONTACT BLOCKS (M4-HQ)**

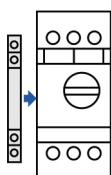
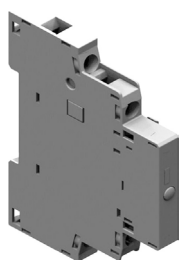


Modello Type	Codice ord. Part number	Contatti aux Aux. contact	Montaggio Mounting	Peso [g] Weight [g]
M4-HQ11	8401074	1NO + 1NC	frontale / front	20
M4-HQ20	8401075	2NO	frontale / front	20
M4-HQ02	8401076	2NC	frontale / front	20

**CONTATTI DI ALLARME / ALARM SWITCH (M4-MA)**


Modello Type	Codice ord. Part number	Contatti aux Aux. contact	Montaggio Mounting	Peso [g] Weight [g]
M4-MA11	8401077	1NO + 1NC	laterale / side	40

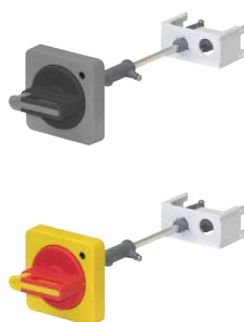
B

**CONTATTI DI ALLARME / ALARM SWITCH (short circuit) (M4-M)**


Modello Type	Codice ord. Part number	Contatti aux Aux. contact	Montaggio Mounting	Peso [g] Weight [g]
M4-M11	8401078	1NO + 1NC	laterale / side	40

Opera in caso di corto-circuito con corrente 20 volte superiore alla corrente nominale dell'interuttore.

*Operates in case of short circuit accidents that is over 20 times of the rated current of the circuit breaker.*

**MANOVRA BLOCCO PORTA IP65 / DOOR INTERLOCK HANDLE IP65 (M4-100R-EH1/EHN1)**


Modello Type	Codice ord. Part number	Descrizione Description	Peso [g] Weight [g]
M4-100R-EH1 115	8401079	manovra blocco porta nera + albero 115mm <i>black handle + shaft 115mm</i>	100
M4-100R-EH1 315	8401080	manovra blocco porta nera + albero 315mm <i>black handle + shaft 315mm</i>	200
M4-100R-EHN1 115	8401081	manovra blocco porta giallo-rossa + albero 115mm <i>yellow-red handle + shaft 115mm</i>	100
M4-100R-EHN1 315	8401082	manovra blocco porta giallo-rossa + albero 115mm <i>yellow-red handle + shaft 115mm</i>	200